

**East Washington St. and N Poplar St.**



Phase 1 will involve both the North and South corners of E Washington St. and N Poplar St. Foot traffic will be directed to use the following crosswalks:

- E Wood and N Poplar.
- N Poplar and E Ruff St
- E Washington and N Brewer St

## East Washington St. and N Poplar St.



Phase 2 will involve the South corner of E Washington St. and N Poplar St. as well as W Washington and N Poplar. Foot traffic will be directed to use the following crosswalks:

- W Washington and Market St.
- E Wood St. and N Poplar
- E Washington and N Brewer St.

## E Washington St. and N Poplar St.



Phase 3 will involve the North and South Corners of W Washington St. and N Poplar St. Foot traffic will be directed to use the following crosswalks:

- W Washington St. and Market St.
- W Wood St. and N Poplar St.
- W Ruff St. and N Poplar St.
- E Wood St. and Brewer St.

## Wood St. and Poplar St.



Phase 1 will involve the corner of E Wood St. and S Poplar St. as well as W Wood St. and S. Poplar St. Foot traffic will be directed to the following crosswalks:

- W Blythe St. and S Poplar St.
- W Wood St. and Market St.
- East Wood St. and S Brewer St.

## Wood St. and Poplar St.



Phase 2 will involve the corners of W Wood St and N Poplar St. as well as W Wood St. and S Poplar St. Foot traffic will be directed to the following crosswalks:

- W Washington St. and N Poplar St.
- W Blythe St. and S Poplar St.
- W Wood St. and Market St.
- W Washington St. and N Poplar St.

## Wood St. and Poplar St.



Phase 3 will involve the corners of E Wood St. and N Poplar St. as well as W Wood St. and N Poplar St. Foot traffic will be directed to the following crosswalks:

- East Washington St. and N Poplar St.
- E Wood St. and N Brewer St.
- W Wood St. and Market St.

## Wood St. and Poplar St.



Phase 4 will involve the corner of W Wood St. and N Poplar St. Foot traffic will be directed to the following crosswalks:

- W Washington St. and N Poplar St.
- W Wood St. and Market St.

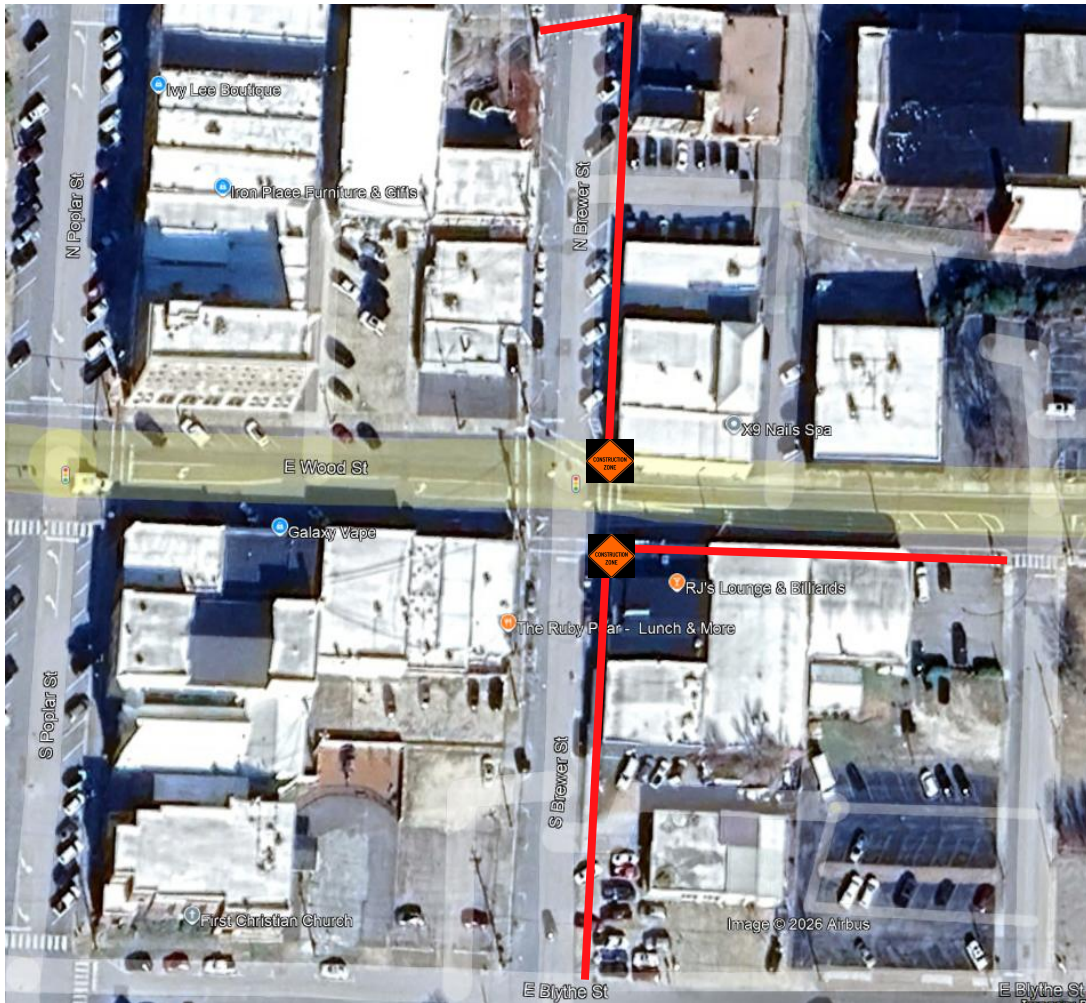
## E Wood St. and S Brewer St.



Phase 1 will involve the East and West corners of E Wood St and S Brewer St. Foot traffic will be directed to the following crosswalks:

- S Brewer St. and E Blythe St.
- E Wood St. and Poplar St.

## E Wood St. and S Brewer St.



Phase 2 will involve the West corner of E Wood St. and N Brewer St. as well as the West corner of E Wood St. and S Brewer St. Foot traffic will be directed to the following crosswalks:

- N Brewer St. and E Washington St.
- E Wood St. and Poplar St.
- S Brewer St. and E Blythe St.

## E Wood St. and S Brewer St.



Phase 3 will involve the East and West corners of E Wood St. and N Brewer St. Foot traffic will be directed to the following crosswalks:

- E Wood St. and Poplar St.
- N Brewer St. and E Washington St.