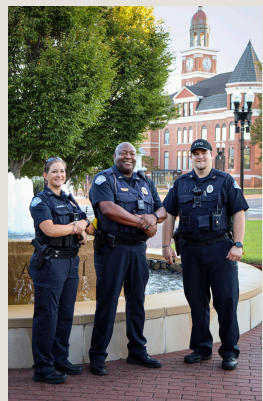
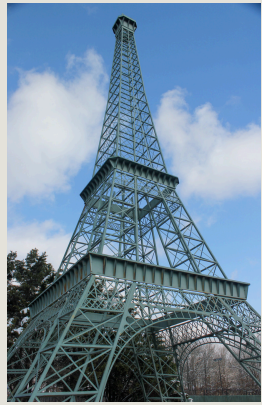


PARIS, TN



where Community, Business, and Hospitality thrive

ABOUT PARIS AND HENRY COUNTY

Paris, Tennessee, is positioned for significant growth, with a strong, engaged community and expanding infrastructure. With key traffic generators, a rising retail hub, and close proximity to a newly planned commercial center, Paris offers an ideal environment for new retail development. This market snapshot provides insight into the area's dynamic retail and workforce environment, making it a prime opportunity for investment and expansion.



Total Population

32,282 with an annual growth rate of 0.06%



Home Value

\$213,473



Median Age

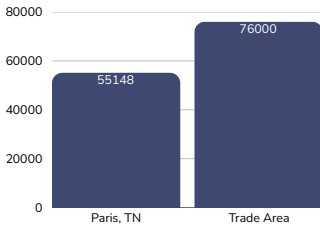
47.1 years old with 55% of the population falling between 18-64 years old



Disposable Income

\$44,567

Average Household Incomes



Paris's income levels reflect a thriving middle-class community, ideal for businesses offering affordable, high-quality products and services. The higher average income in the surrounding trade area further expands the potential customer base for new retail opportunities.

Healthcare Infrastructure

West TN Healthcare Henry County Hospital: 142-bed hospital, 900 full-time employees, 70 physicians, and 35 specialties.

Additionally, Paris offers assisted and independent living facilities, meeting the needs of its growing retirement community.

Educational Landscape

- Paris Special School District (PSSD): 1,500 students across PreK-12 grades.
- Henry County School System (HCSS): 3,000 students in K-12.
- Tennessee College of Applied Technology (TCAT): 800 students and staff daily in a 100,000 sq. ft. facility.
- Bethel University: Physician Assistant Program with 50 students, plus other local higher education options.



Traffic Count

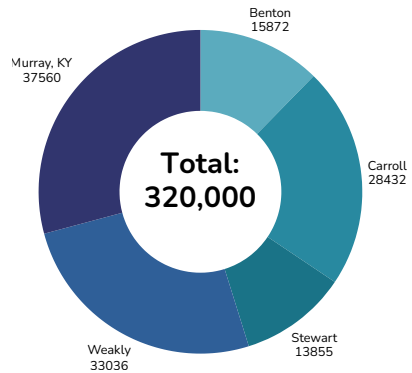
Mineral Wells Avenue: 22,234 daily

Memorial Drive: 13,492 daily

E. Wood Street (Lake Hwy): 18,336 daily

Tyson Avenue: 15,242 daily

Trade Area



Tourist & Traffic Generator

(by annual visitors)

-  World's Biggest Fish Fry: 52,300
-  TN River Jam: 10,000
-  The Lodge at Paris Landing: 116,200
-  Eiffel Tower Park: 338,000
-  Henry County Fair: 188,300
-  Historic Downtown Paris: 632,300
-  Memorial Plaza: 2.4 million
-  Lowes: 670,300

Employers

Henry County Medical Center

900 Full Time Employees

Dana Corporation

600 Full Time Employees

Tosh Farms

600 Full Time Employees

Henry County School System

550 Full Time Employees

Walmart

300 Full Time Employees

GROWTH & DEVELOPMENT

Paris, TN, is experiencing a period of rapid growth and transformation, making it an ideal time for new retail investment in the community. Several major developments are underway, driving increased traffic, economic expansion, and demand for high-quality goods and services.

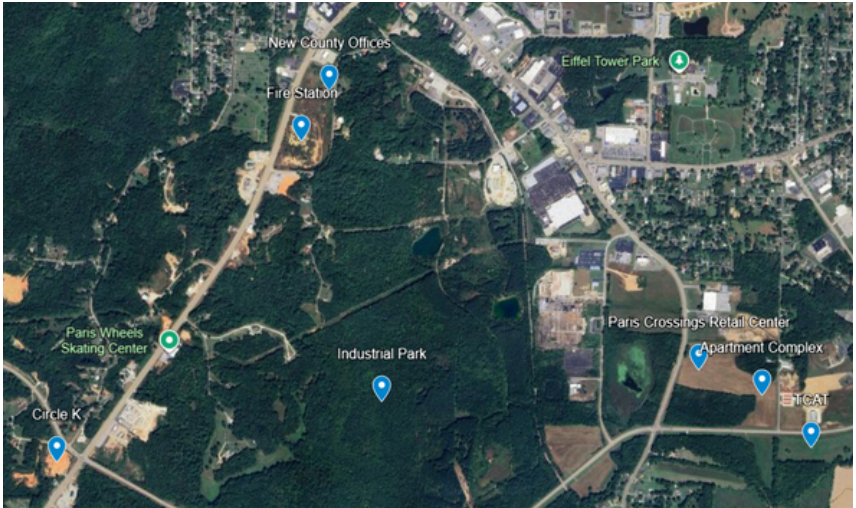
With significant investment in infrastructure, retail, housing, and workforce expansion, now is the perfect time for retailers to establish a presence in Paris, TN, capturing a rapidly growing customer base in an untapped market.



**Paris
Crossings**
MINERAL WELLS AVE

Opening Summer 2026 – A transformative shopping destination featuring major retailers like Aldi, Ulta, Bath & Body Works, Rack Room Shoes, Five Below, Burlington, TJ Maxx, Hobby Lobby, and PetSmart will drive massive customer traffic and create a retail hub.

A Thriving Market for Expansion



New City of Paris Fire Station & Henry County Office Building – Investments in public safety and government services are expanding infrastructure, supporting a growing population, and increasing daily workforce presence.

New TCAT Campus – A 100,000 sq. ft. facility on 20 acres, bringing in 800 students and staff daily, is set to generate significant foot traffic and attract more young professionals to the area

Industrial Park Development – Business expansion is bringing new jobs and economic opportunities, strengthening the local workforce and consumer spending.

New Apartment Complex – Increasing residential density, this 150 unit development will add more potential customers looking for convenient and high-quality dining options.

Circle K Convenience Store & Gas Station – This high-traffic business will enhance accessibility for commuters and travelers, further increasing visibility and demand for dining options in the area.

MEET OUR TEAM



KIM FOSTER
City Manager

Email: kfoster@cityofparistn.gov
Phone: 731-641-1408
Cell: 731-336-4269



JESSICA CROUCH
Community Development Director

Email: jcrouch@cityofparistn.gov
Phone: 731-641-1410
Cell: 731-441-3835